

NEOEN



Thunderbolt Energy Hub

CCC Meeting, 15 September 2021



1. **Questions on Notice**

2. Neighbour Benefit Sharing Update

3. Ecology Update – Bill Wallach (Umwelt)

4. Social Impact Assessment Update – Sarah Bell (Umwelt)

Questions on Notice

1. Possibility of having a connection expert e.g., Neoen connection expert or Transgrid or REZ Roadmap Team to present at the next meeting. Neoen to enquire as to who the most appropriate group would be to provide information to this group.

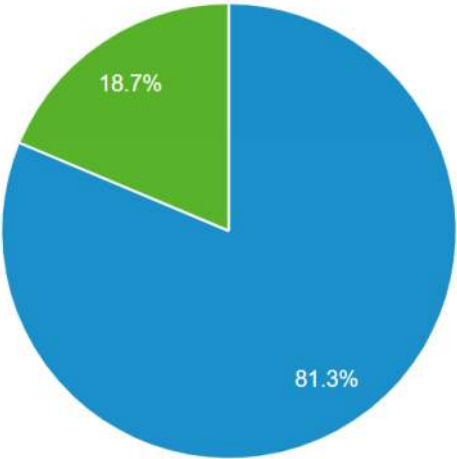
Neoen can organise for an internal network expert to attend and discuss the current state of the network and how this might change when more projects are connected. Neoen has reached out to the REZ Roadmap Team who have said they would be willing to attend a later CCC meeting.

2. Add CCC members to the communication register so that they receive information/newsletters at the same time as everyone else.

All CCC member emails have been added to the communications register.

3. Neoen to investigate website traffic data

■ New Visitor ■ Returning Visitor



Users

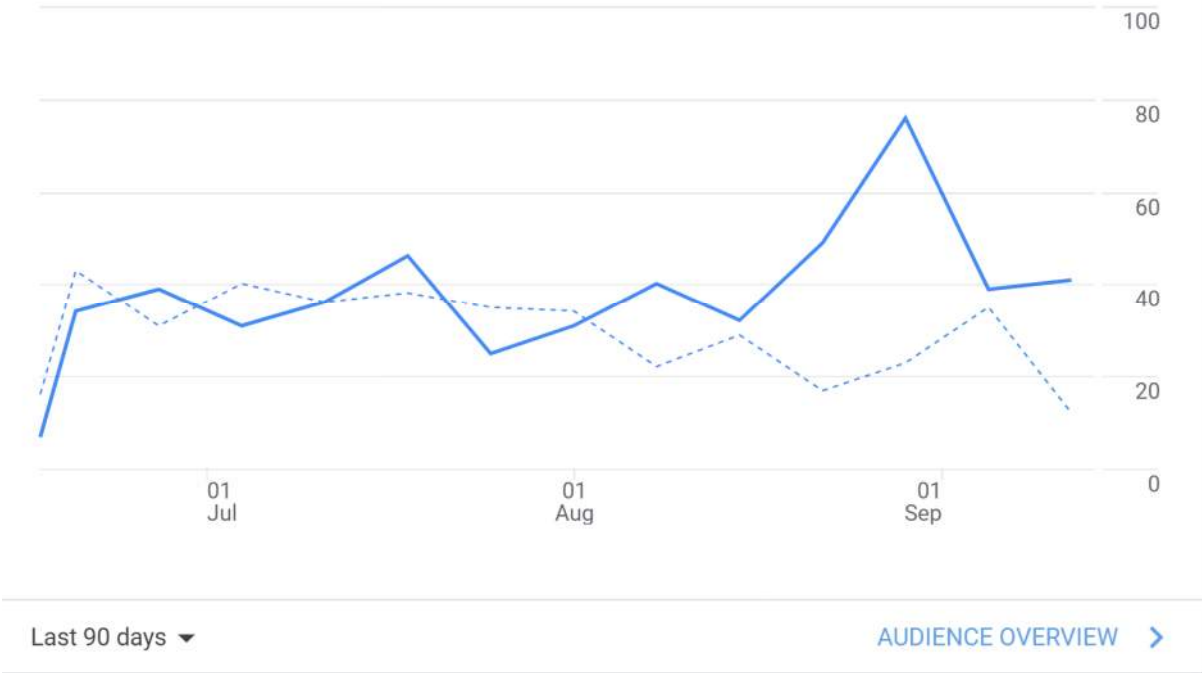
438

↑30.0%


Sessions

709

↑34.3%



4. Wind Farm Benefit Sharing Comparison Table

Project Name	Status	Size (MW)	Community Benefit Fund	Other benefit
Thunderbolt Wind Farm	Proposed	200	\$3125/turbine \$100k total	
Winterbourne Wind Farm	Proposed	700	Amount not announced	<p>From the Winterbourne Wind Farm Website: <i>“In an innovative benefits sharing model, WalchaWind Pty Ltd — a private company owned by a group of local landowners — holds 5% of the project. WalchaWind has committed to sharing the benefits it receives with project neighbours and the broader Walcha community, providing durable financial and social benefits.”</i></p>
Doughboy Wind Farm	Proposed	300	No detail on website	No detail on website
Hills of Gold Wind Farm	Proposed	420	\$2,500/turbine \$175,000 cap	Community Enhancement Fund: \$2,500 per wind turbine per year installed and operating (up to \$175,000)
Sapphire Wind Farm	Operating	270	\$2433/turbine \$182,500 total	Community co-investment (6% return for 9.5 years)
White Rock Wind Farm	Operating	175	\$2,500/turbine \$175,000 total	

5. Project Decommissioning

- Neoen has contractually committed to the host landholder that it will decommission the wind farm,
- Neoen must do this within 24-months
- Decommissioning includes removing all of:
 - Wind Turbines,
 - Electrical Substations,
 - Power lines (above ground and underground),
 - Roads,
 - Operation and Maintenance Facilities,
 - Fences,
 - Signage,
 - And anything else on the site.
- With respect to wind turbine foundations, which cannot be removed, Neoen must cut off and cover these.



Wind turbines are decommissioned in the exact reverse of how they are constructed, with cranes removing components from the top down.

6. Response to information in advertisement

Article comment	Neoen's comment
466 wind turbines and 10.2 million solar panels are proposed within a 70km radius of Walcha...	The turbine numbers matches the public information that Neoen has seen on public websites. Neoen does not know how the figure of 10.2 million panels was arrived at. Neoen notes that proposals are not the same as projects, and there is no certainty that all of these projects will proceed.
The Renewable Energy Trust (RET) will subsidise the eligible companies \$500,000 per wind turbine a year for approx. 15 years or whenever the 9.3 billion dollars has expired	The NSW coal fleet is closing. The NSW Government has announced it will run competitive tenders and will underwrite the most competitive projects to ensure there is enough electricity supply in the state. The main objectives of these tenders are to incentivise investment and protect the financial interests of NSW electricity consumers.
Hosts, being landholders that have entered into a contract with the developer to have wind turbines on their land, will receive \$15,000 to \$30,000 per turbine per year in NSW. In QLD they will receive \$60,000 per year per turbine.	Rent payments are not determined by State but through commercial negotiation between companies (such as Neoen) and the host landholder.
Part quote from the Wind Commissioner, Andrew Dyer: "Fees for hosting a wind turbine for 25 years is in the range of \$250,000 to \$625,000 (depending on the turbine capacity)..."	Commercial agreements with wind turbine hosts are confidential, so Neoen cannot comment on this statement.
No laws in Australia making developers or operators responsible for removing these wind turbines. This would reduce their profit margins if they were made to decommission the turbines.	Neoen have built in decommissioning clauses in all agreements with host landholders. Neoen is obliged to decommission a project after the operations phase is completed. This is also a condition of the NSW Government's development approval.
A developer will on sell the business to another company. This could be a nightmare for the host.	Neoen do not on-sell our projects.
No protection for the host. After 20 years the chances are high that the company has been sold to an overseas company and that this company will go into voluntary liquidation which the Australian Government can't do anything about. The host will be left with a massive clean up bill to remove turbines and rehabilitate the native vegetation.	Australia has never had an abandoned wind farm, or even an abandoned wind turbine. The oldest Australian wind farms are described in the table on the next slide.
Why should rate payers have to foot the bill for all the waste. It is the Council's responsibility to take care of the waste that is not recyclable. They would have to build massive land fill sites for these 80m to 100m blades which are made of carbon fibre (non recyclable).	Neoen is committed to identifying recycling channels for all our activities and integrates a recycling commitment clause into all new supply agreements. The wind turbine manufacturers are pro-actively developing solutions to turbine waste, For example, earlier this year Vestas announced a new technology which will enable blades to be fully recyclable.

Wind Farm Track Record Australia

Wind farm	State	Capacity (MW)	Years Operating	Current status
Salmon Beach	WA	0.360	(15) 1987	Decommissioned
Esperance 10 mile Lagoon Wind Farm	WA	2.025	28	Operating
Denham	WA	1.02	24	Operating
Huxley Hill	TAS	2.45	23	Operating
Crookwell Wind Farm	NSW	4.8	21	Operating
Windy Hill	QLD	12	21	Operating
Blayney Wind Farm	NSW	9.9	20	Operating
Albany	WA	21.6	20	Operating
Hampton Wind Park	NSW	1.32	20	Operating
Codrington Wind Farm	VIC	18.2	19	Operating
Toora Wind Farm	VIC	21	19	Operating
Woolnorth Wind Farm	TAS	64.75	18	Operating

- 
1. Questions on Notice
 - 2. Neighbour Benefit Sharing Update**
 3. Ecology Update – Bill Wallach (Umwelt)
 4. Social Impact Assessment Update – Sarah Bell (Umwelt)

Neighbour Benefits




EXAMPLE NEIGHBOUR PAYMENT

In this example, there are 2 wind turbines proposed within 2-2.5km from a neighbour's dwelling, 4 turbines between 2.5-3km and 1 turbine within 3-3.5km.



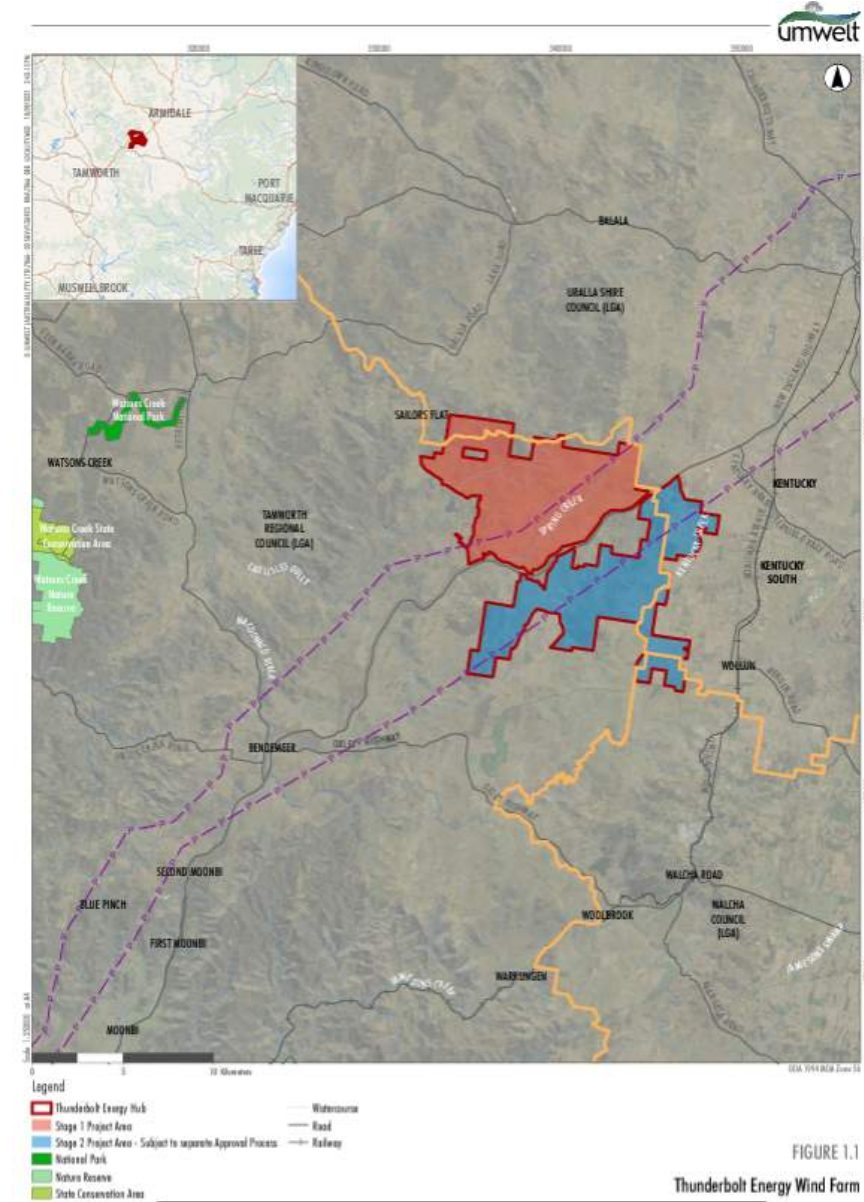
Their annual neighbour benefits payment would be: **\$15,000 each year**

$$(\$3,000 \times 2) + (\$2,000 \times 4) + (\$1,000 \times 1)$$

- 
1. Questions on Notice
 2. Neighbour Benefit Sharing Update
 3. **Ecology Update – Bill Wallach (Umwelt)**
 4. Social Impact Assessment Update – Sarah Bell (Umwelt)

Ecology – Introduction

- Umwelt have been engaged by Neoen in 2020 to complete the biodiversity assessment
- Topics to be covered
 1. Biodiversity Assessment
 2. EPBC Referral
 3. Biodiversity Surveys – methods
 4. Biodiversity Surveys – results
 5. What's next?



Stage 1

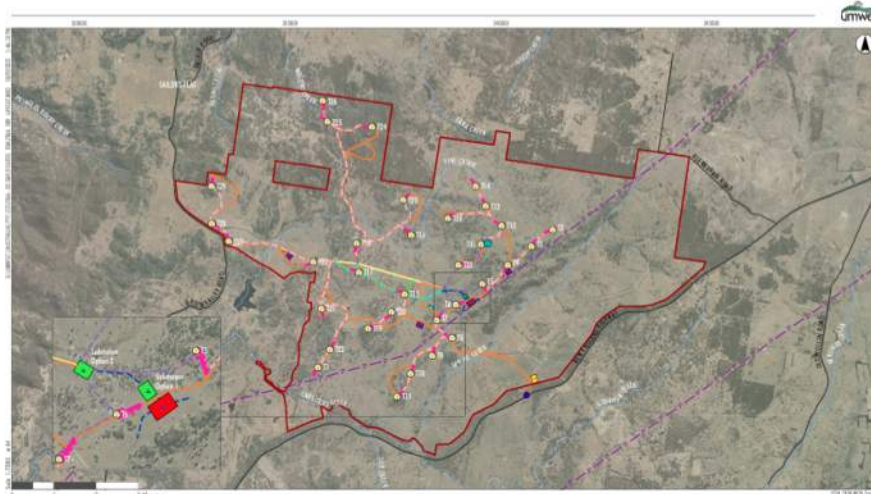


FIGURE 1.2
Stage 1 Conceptual Layout

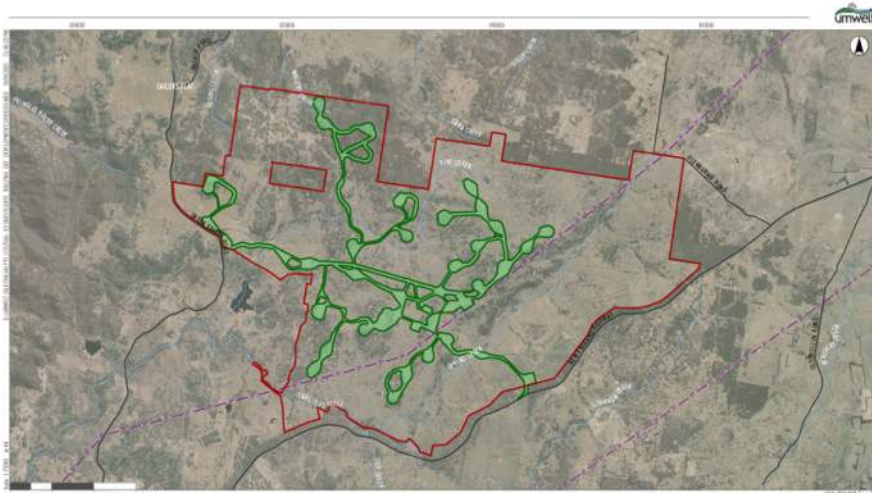


FIGURE 1.3
Proposed Development Corridor



Biodiversity Assessment

- Under the *Biodiversity Conservation Act 2017* (BC Act), the biodiversity assessment is being completed in accordance with the Biodiversity Assessment Method (BAM) 2020
- The BAM requires:
 1. Consultation with state and federal agencies
 2. Extensive field surveys, including vegetation and threatened species
 3. Preparation of a Biodiversity Development Assessment Report
 4. Avoid, Minimise and/or Mitigate impacts to biodiversity values
 5. Offset any residual impacts to biodiversity values



Environment Protection and Biodiversity Conservation Act 1999 **(EPBC Act) Referral**

- Assessment Bilateral Agreement between NSW and Commonwealth governments sees the Project assessed under the NSW Biodiversity Offsets Scheme
- A Referral under the EPBC Act to enable the Minister to determine if the Project will need assessment and approval under the EPBC Act.
- Considers the impacts of the Project on Matters of National Environmental Significance, being EPBC Act listed species and ecological communities
- Assesses whether the impact is or has the potential to be significant, via detailed supporting document and Assessments of Significance in line with 'Significant Impact Guidelines 1.1'
- The Referral for the Project has been prepared



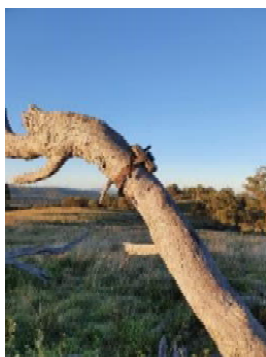
Survey Effort

- May, August, October and December 2020
- February, March and August 2021...more to come
- 32 Floristic Plots
- 106 Rapid Vegetation Assessments
- 185 General Observation Points
- Targeted flora species transects
- Targeted reptile surveys
- Nocturnal spotlighting and call playback surveys (frogs, forest owls, mammals)
- Targeted call playback and bird surveys for regent honeyeater and swift parrot

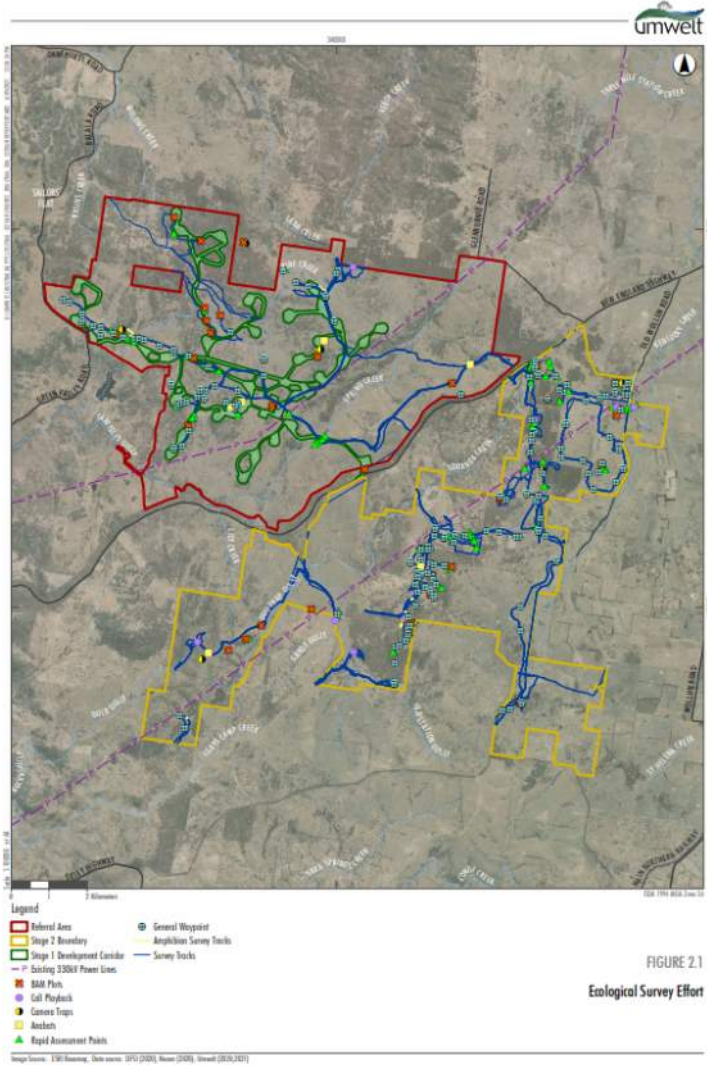


Survey Effort – Cont.

- Targeted habitat surveys for forest cockatoos
- Two rounds of Bird and Bat Utilisation Surveys
 1. Four sites in May 2020 – birds surveyed twice and bats surveyed across three nights
 2. Four sites in February 2021 – birds surveyed twice and bats surveyed across 29 nights
- 10 remote survey cameras deployed for 29 nights (290 survey nights)



Survey Effort



Survey Results

- Bluegrass (*Dicanthium setosum*) and McKie's Stringybark (*Eucalyptus mckieana*) – Vulnerable BC Act/EPBC Act
- Speckled warbler (*Chthonicola sagittata*), Dusky woodswallow (*Artamus cyanopterus cyanopterus*), Scarlett robin (*Petroica boodang*), Diamond firetail (*Stagonopleura guttata*) – Vulnerable BC Act
- *White box - yellow box - Blakely's red gum grassy woodlands and derived native grasslands* Critically Endangered Ecological Community (CEEC) EPBC Act / *White box yellow box Blakely's red gum grassy woodland and derived native grassland* CEEC BC Act
- *New England Peppermint (Eucalyptus nova-anglica) grassy woodlands* CEEC EPBC ACT / *New England Peppermint (Eucalyptus nova-anglica) Woodland on Basalts and Sediments in the New England Tableland Bioregion* CEEC BC Act




<https://australian.museum/learn/animals/birds/speckled-warbler/>; <https://www.birdlife.org.au/bird-profile/dusky-woodswallow>; <https://www.birdlife.org.au/bird-profile/scarlet-robin>;
<https://australian.museum/learn/animals/birds/diamond-firetail/>; Umwelt 2020

What's Next?

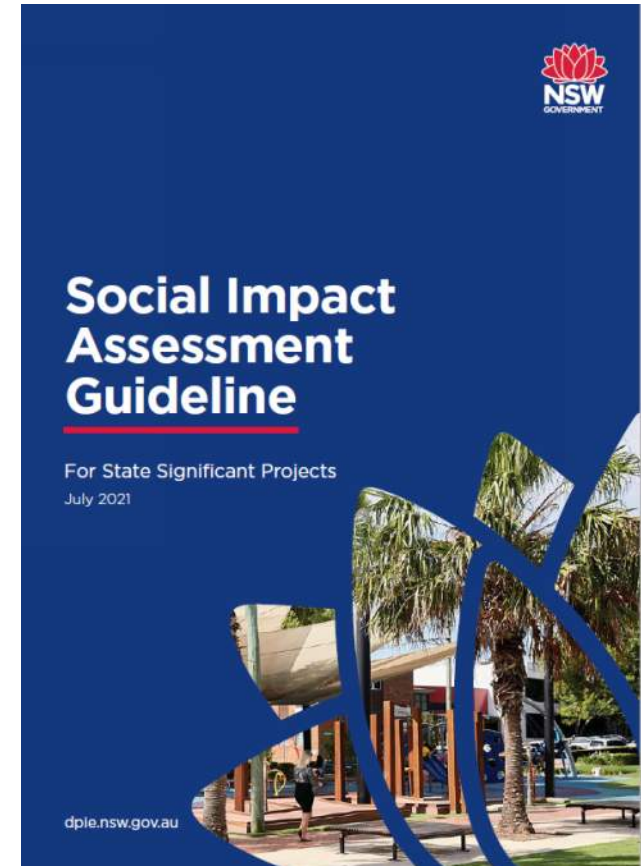


- Additional surveys spring 2021 and summer 2021/22
- Consultation with state and federal agencies
- Submission of the Referral, available for public comment
- Biodiversity Development Assessment Report, including:
 1. Plant Community Type allocation
 2. Detailed Threatened Ecological Community analysis
 3. GIS Mapping
 4. Assessments of prescribed impacts
 5. Operation and submission of online BAM – Credit Calculator
- Offset strategy including potential local land-based offsets

- 
1. Questions on Notice
 2. Neighbour Benefit Sharing Update
 3. Ecology Update – Bill Wallach (Umwelt)
 4. **Social Impact Assessment Update – Sarah Bell (Umwelt)**

Social Impact Assessment

1. A **Social Impact Assessment (SIA)** is the process of analysing, assessing and responding to the potential social impacts of a proposed development, with a view to minimising negative social impacts and enhancing positive social impacts
2. DPIE has recently released a **Social Impact Assessment Guideline** (2021) that provides direction on assessing the potential community and social impacts of State Significant Development projects across NSW
3. **SIA is participatory**: respectful, inclusive and meaningful engagement with potentially affected people and other interested parties is a fundamental component of good SIA practice
4. The SIA is undertaken in parallel with the EIS and will help to inform project design and planning.





Social Impact Assessment

How to get involved?

- 1. Community Feedback Survey:** Your feedback is greatly appreciated and will inform the SIA to be assessed by DPIE, see link or QR code to complete
<https://www.surveymonkey.com/r/neoenthunderbolt>
- 2. Service Provider and Local Business Survey:** to be rolled out in September, please use contact details below to be involved
- 3. SIA Meetings:** consultation with community groups will take place over September
- 4. Broader community consultation is ongoing for the Project:** personal or small group meetings can be arranged for those interested in participating further or by providing more detailed feedback

If you would like to speak with someone from the SIA team directly, please contact social-team@umwelt.com.au or call our SIA consultant on 0436 674 277



A photograph of a white wind turbine against a clear blue sky. The turbine is positioned on the right side of the frame, with its three blades extending towards the left. The background is a solid, vibrant blue.

Thank You

NEOEN