

NEOEN



# Thunderbolt Energy Hub

*CCC Meeting, 3 August 2021*



# 1. Introduction

2. Proposed project

3. Planning Process

4. Progress & Project Changes

5. Community Engagement

# Neoen is Australia's leading renewable energy company



## • Solar

In operation: 458 MWp  
Under construction: 460 MWp



## • Wind

In operation: 531 MW  
Under construction: 157 MW



## • Storage

In operation: 176 MW  
Under construction: 300 MW



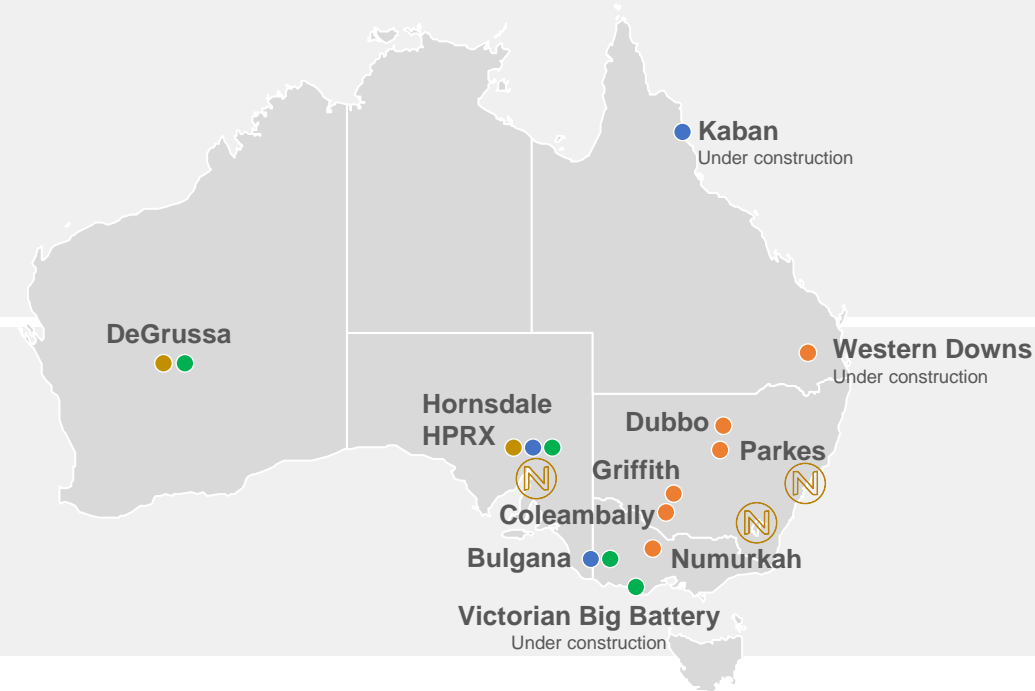
## 3 Offices

Canberra • Sydney  
Adelaide



## 60

Employees



## Total Capacity 2.082 GW<sup>(1)</sup>

In operation: 1.165 GW  
Under construction: 917 MW


(1) As of June, 2021



# Australia's leading renewable energy company

## Strong sustainability credentials



- Top 2% of companies as assessed by  (European sustainability benchmark)
- Launched our corporate Sustainability Framework in 2021
- Contributing to 10 of 17 UN's Sustainable Development Goals

## Social licence to operate



- Community consultation and engagement that starts early, is sustained and participatory
- Community benefit-sharing scheme for every project over 25 MW
- Total community contribution for Neoen Australia's portfolio set to reach \$500k p.a. in 2022

# Our NSW Projects

## Delivered facilities



**PARKES**  
SOLAR FARM



**GRIFFITH**  
SOLAR FARM



**DUBBO**  
SOLAR HUB



**COLEAMBALLY**  
SOLAR FARM



**650 GWh**

Of clean energy produced every  
year



**app. \$500m**

Already invested in NSW



**600 construction jobs**

Created since 2017

## Development pipeline

**1.5GW+ of solar, wind and storage**  
Equivalent to 5x Neoen's installed capacity in NSW





1. Introduction

**2. Proposed project**

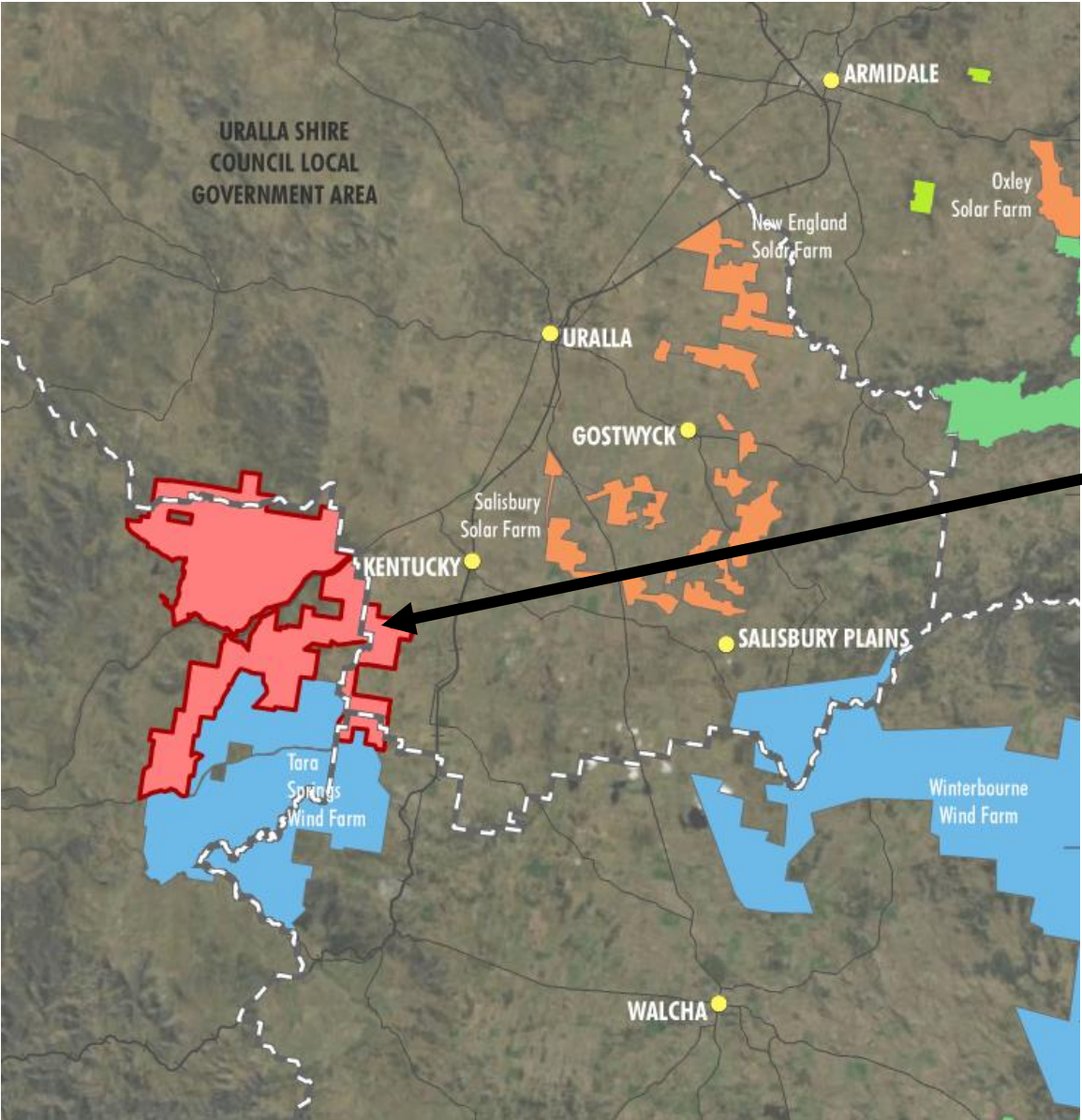
3. Planning Process

4. Progress & Project Changes

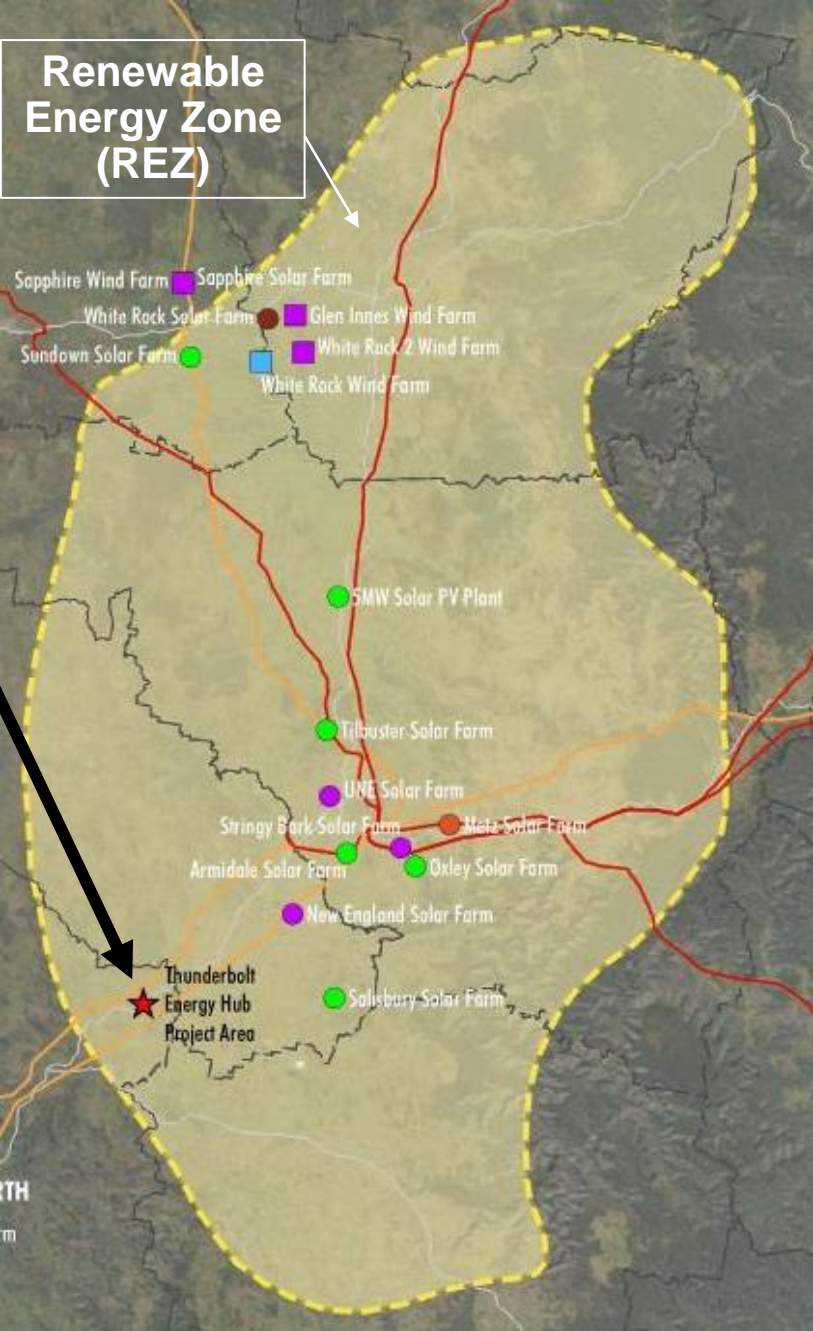
5. Community Engagement



# Thunderbolt Energy Hub Location



**Thunderbolt Energy Hub**





# Thunderbolt Energy Hub (preliminary layout)



## LOCATION

In the Kentucky and Bendemeer regions; approximately 40km north-east of Tamworth and 40km south-west of Armidale. The project is located within the New England Renewable Energy Zone (REZ).



## PROJECT SIZE

The project was planned to consist of a 380MW wind farm, 120MW solar farm and a 400MW battery. The tip height of the turbines is approximated as 260m.



## PROJECT LAND

The project will be installed across a number of freehold rural properties.



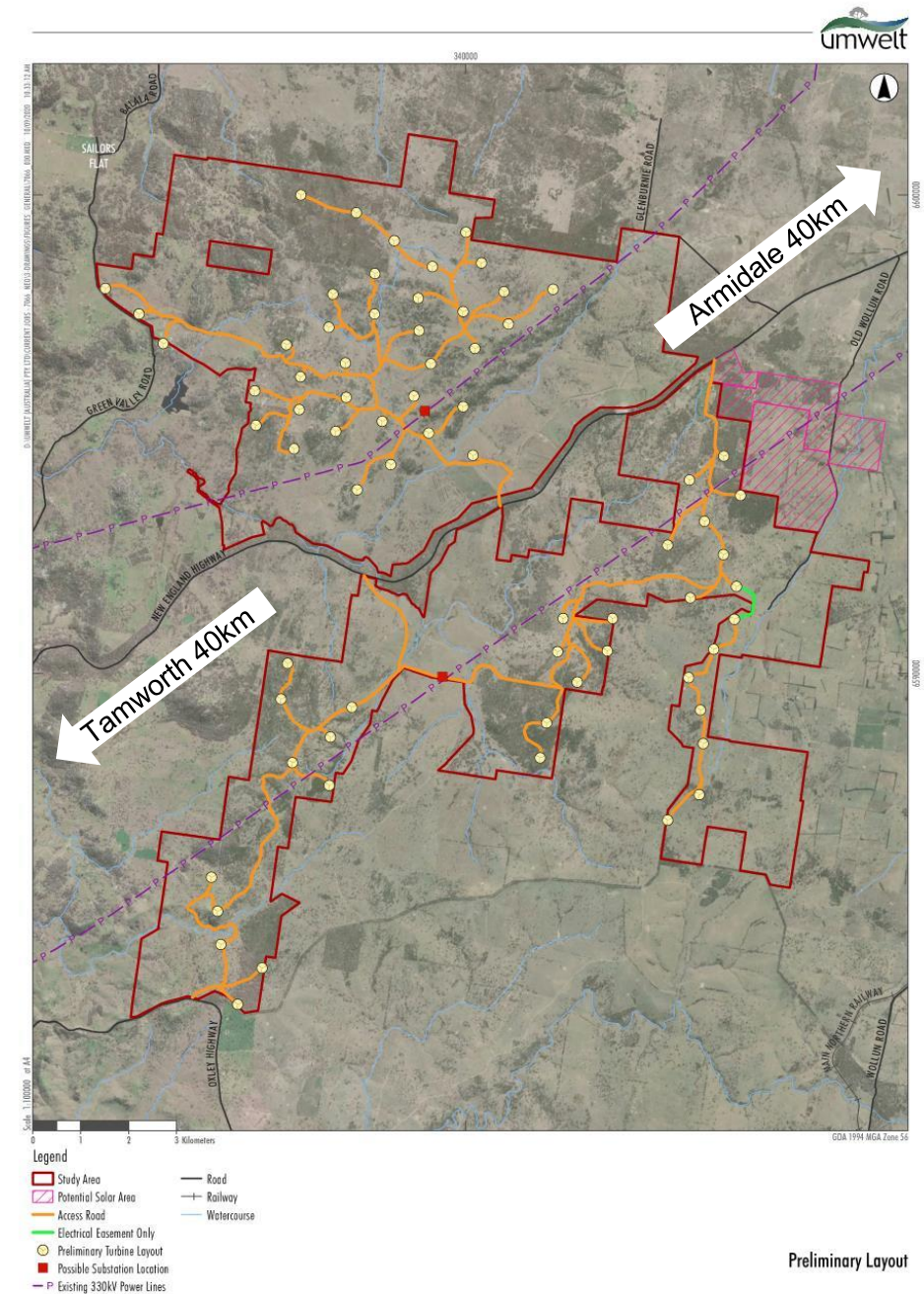
## EXCELLENT WIND AND SOLAR RESOURCE

Our preliminary investigations showed that the wind and solar resources are very good in this region. The wind resource has been verified through on-site measurements.




## TRANSMISSION PROXIMITY

Two 330kV transmission lines cross the project site. The best point of connection, into one or both of these lines, is still being finalised.

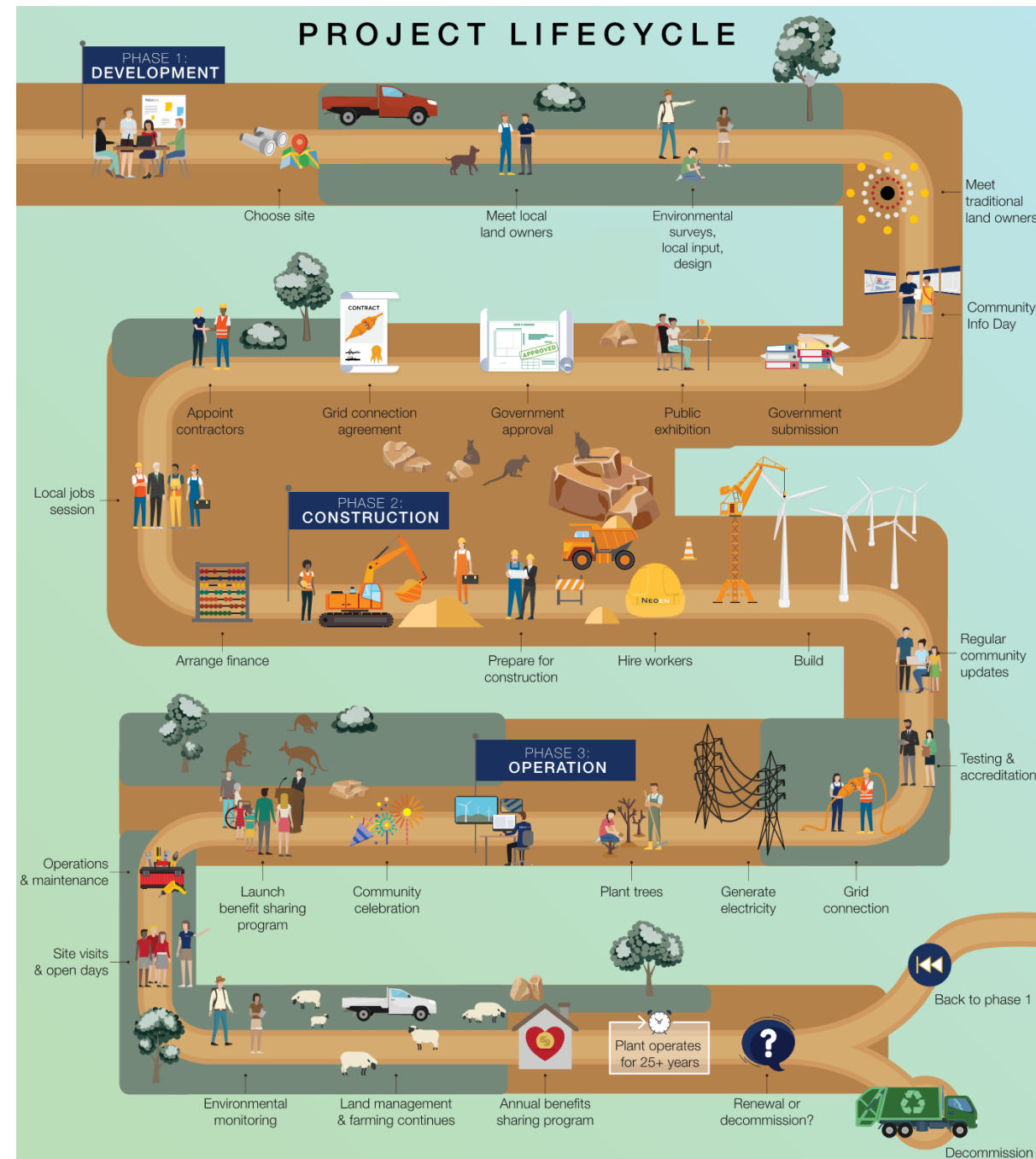




- 
1. Introduction
  2. Proposed project
  - 3. Planning Process**
  4. Progress & Project Changes
  5. Community Engagement

# Planning Process

- Thunderbolt Energy Hub is a State Significant Development (SSD)
- Development Application (DA) approval will be decided by NSW Government
- First step is to submit a preliminary report, called Scoping Report –submitted Nov 2020
- NSW Government releases special requirements that Neoen has to meet during the detailed assessment phase, this is called SEARs – received Dec 2020
- Detailed surveys and assessments are undertaken in line with SEARs to inform the Environmental Impact Statement (EIS) report - this is the main report submitted with the Development Application (DA)
- DA targeted to be submitted in October 2021
- Establishing a CCC is a condition of the wind farm SEARs



# SEARs (Secretary's Environmental Assessment Requirements)

## GENERAL REQUIREMENTS


- Assessment of likely impacts on the environment
- Measures to avoid residual impact on the environment
- Detailed consultation with the community & relevant agencies
- Establish a CCC

## KEY ISSUES FOR NEOEN TO ADDRESS

- Landscape & Visual Impacts
- Noise and Vibration
- Biodiversity
- Traffic and Transport
- Hazards and Risks, e.g. aviation safety, telecommunications & bushfire
- Heritage (Aboriginal & Historic)
- Waste
- Water & Soils
- Social & Economic





- 
1. Introduction
  2. Proposed project
  3. Planning Process
  - 4. Progress & Project Changes**
  5. Community Engagement

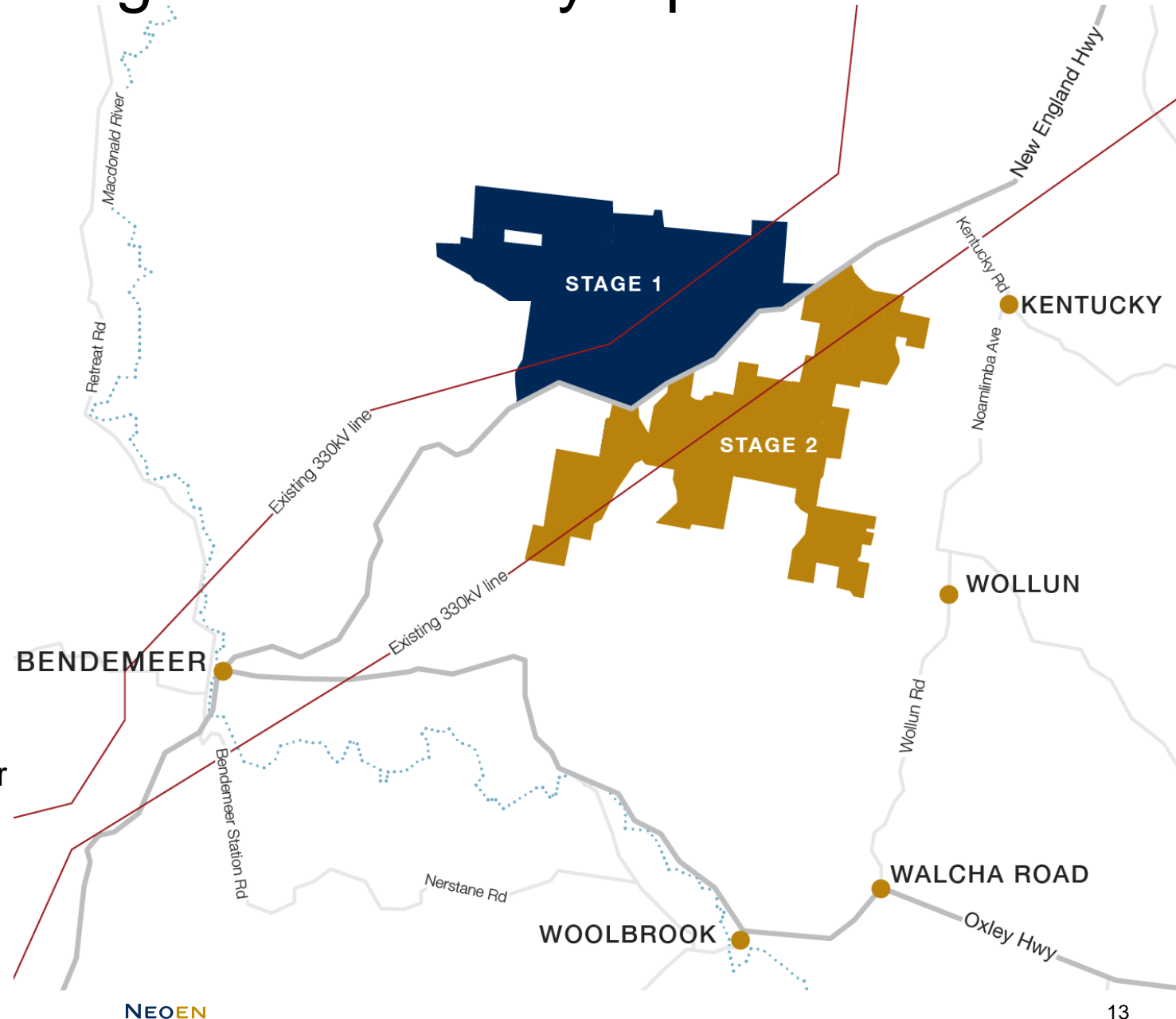
# Project Changes - Responding to Community Input

## PROJECT STAGING

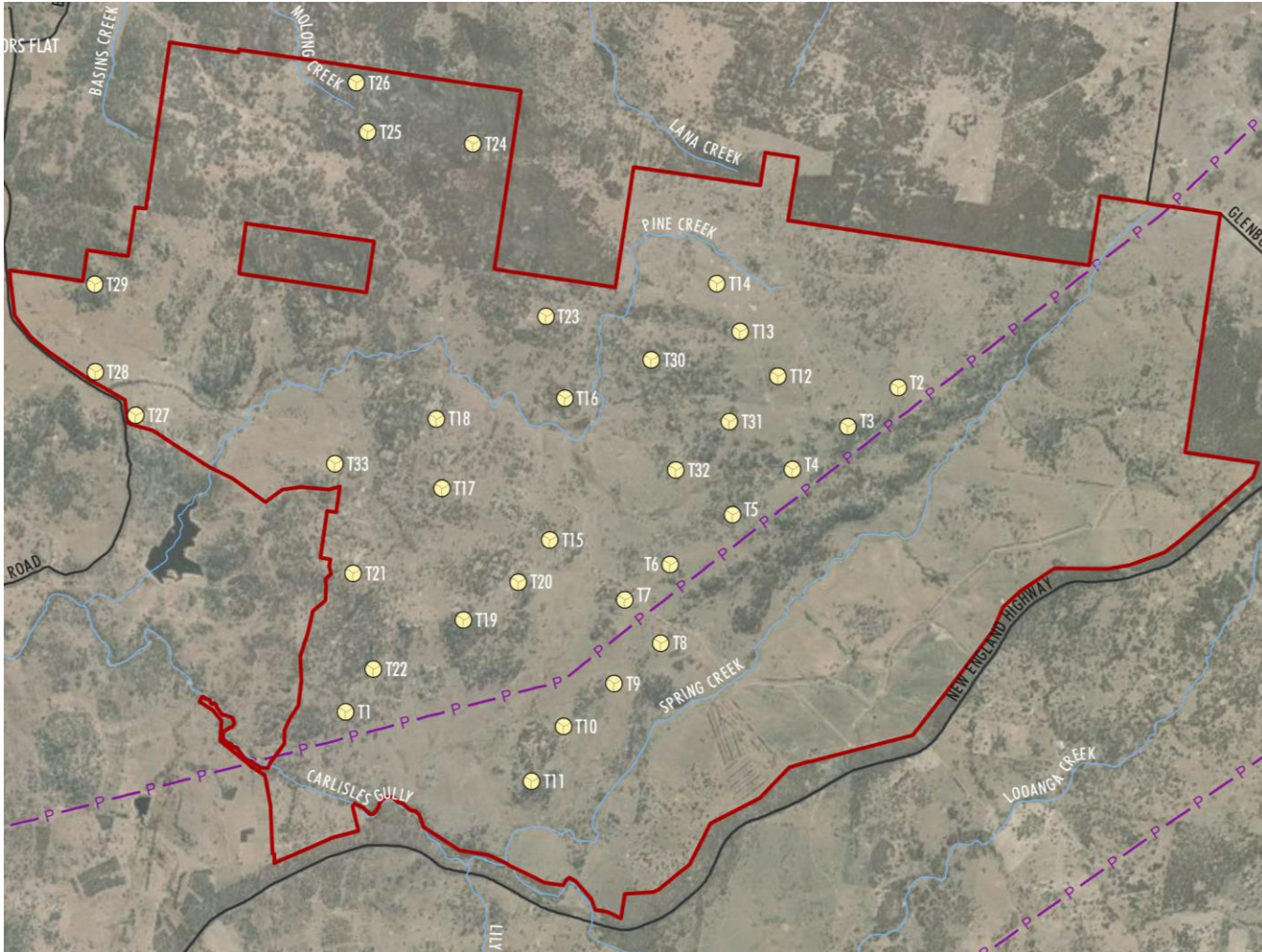
- Stage 1: land to the north of the New England Hwy (33 turbines)
- Stage 2: south of the New England Hwy (25 turbines) & 120MW solar

## REASONS FOR STAGED APPROACH

- Neoen has decided to stage the project based on the feedback received from neighbours, the local community and MPs
- Concerns relates to wind farm's proximity to Kentucky village and residents
- Neoen would like to prove its professionalism, gain the community's trust and demonstrate our contribution socially & economically
- Stage 2 based on success of stage 1



# Thunderbolt Energy Hub LGAs



## STAGE 1 LAYOUT (SHOWN)

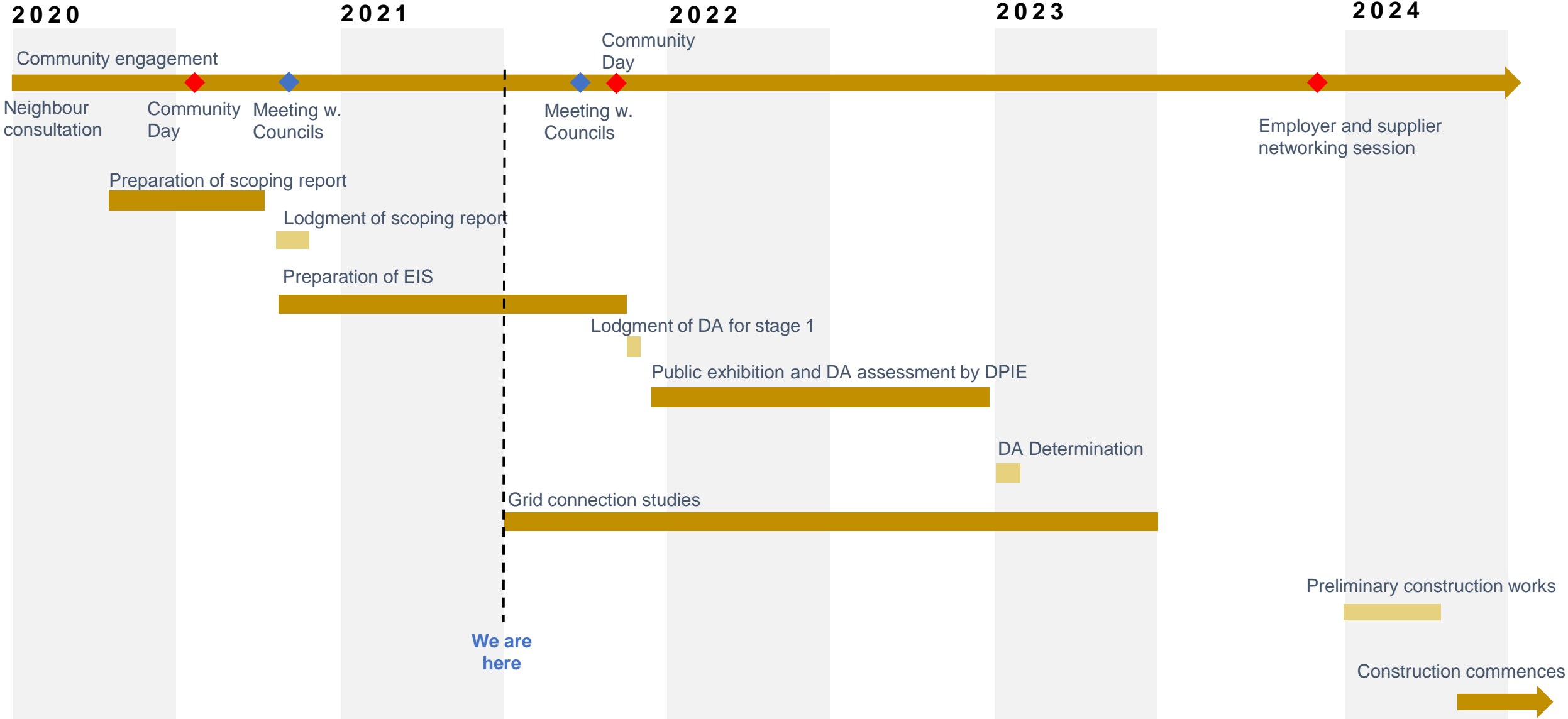
- No. of wind turbines in:
  - Tamworth LGA: 30
  - Uralla Shire LGA: 3
  - Walcha LGA: 0

## STAGE 2 LAYOUT

- Approximate no. of wind turbines in:
  - Tamworth LGA: 20
  - Uralla Shire LGA: 4
  - Walcha LGA: 1
- Solar farm will be located in the Uralla Shire LGA



# PROPOSED PROJECT TIMELINE – STAGE 1



**KEY**

- EIS Environmental Impact Statement
- DA Development Application
- DPIE NSW Department of Planning, Industry and Development
- ◆◆ Key Community event

- 
1. Context and Introduction
  2. Proposed project
  3. Planning Process
  4. Progress & Project Changes
  5. **Community Engagement**

# Community Engagement Approach

Early – ongoing – participatory - responsive



## COMMUNITY CONSULTATION

- Working with a host landholder group – inclusive, open & transparent
- Over 70 neighbours and community members met to date either in a one-on-one setting or a group setting to date to discuss the project
- Local community liaison officer engaged in September 2020
- Meetings & presentations to local Council, business chamber & MPs
- Website, feedback form and 1800# number set up
- Newsletters & letterbox drops
- Job seeker and supplier register established

## COMMUNITY OPEN DAYS

- First community day was held in September 2020
- A second community day will be hosted in September 2021

## BENEFIT SHARING

- Community Benefits Program: \$200,000 per annum throughout the operations phase of the project (based on current size of stages 1 & 2)
- Neighbour Benefit Sharing: details to be shared with the community soon





# Community Benefits Program



## Community Benefit Fund

The funds would be allocated to local community projects through a competitive annual grants process. The fund could be administered either by Council or a local organization.



## Possibility to invest in the project

Would you like the opportunity to invest some of your money in this project and make an annual return?



## Support of local art and tourism

Are there any local arts or tourism ideas that you would like to see or support?



## Solar and battery storage for households



## Tell us your ideas

To submit your ideas, please fill out our online survey:

[www.surveymonkey.com/r/neoentunderbolt](http://www.surveymonkey.com/r/neoentunderbolt)

# Economic benefits (Stage 1 + Stage 2)



**ECONOMIC  
BOOST**  
FOR LOCAL  
ACCOMMODATION  
& SERVICE SECTORS



**OVER \$1 BILLION**  
INFRASTRUCTURE  
INVESTMENT



**600+**  
JOBS CREATED  
DURING  
CONSTRUCTION



**20-30**  
JOBS CREATED  
DURING  
OPERATION





*Thank you for listening*

**NEOEN**

ARGENTINA AUSTRALIA COLOMBIA ECUADOR EL SALVADOR FINLAND FRANCE IRELAND JAMAICA MEXICO MOZAMBIQUE PORTUGAL USA ZAMBIA